



CONTENTS

OPPORTUNITIES

- 03. A New Website Offers No-Cost Technical Assistance for Rural Justice and Behavioral Health Initiatives
- 03. Now Accepting Applications for the Institute for Coordinated Community Response's Annual Cohort Program

RESEARCH & REPORTS

- 04. Evaluation of a Primary Care-Based Medication for Opioid Use Disorder Program in a Fully Integrated Federally Qualified Health Center
- 04. Integrating Mental Health Support Into Rural Libraries: Evaluation of the Libraries for Health (L4H) Initiative
- 05. How Rural Communities Are Using EMS to Help Solve the Opioid Crisis
- 05. A New Treatment Study Is Showing Promise for Rural Mainers With Opioid Use Disorder

PROGRAMS

- 06. Real Justice Starts With Listening, Not Labels
- 06. How a New Program Is Sparking Change in Ohio Jails



PRESENTATIONS

- 06. Breaking Bread: "Out of the Shadows" Screening & Rural Mental Health Discussion
- 07. Lessons in Framing Overdose Prevention: Considerations for Rural Communities

RESOURCE

- 07. Reducing Stigma Related to SUD in Rural Care Settings

OPPORTUNITIES

A NEW WEBSITE OFFERS NO-COST TECHNICAL ASSISTANCE FOR RURAL JUSTICE & BEHAVIORAL HEALTH INITIATIVES

Rulo Strategies has launched a new website designed to support rural communities with no-cost technical assistance as they work to advance justice and behavioral health solutions.

www.ruraljusticesolutions.org



NOW ACCEPTING APPLICATIONS FOR THE INSTITUTE FOR COORDINATED COMMUNITY RESPONSE'S (ICCR) ANNUAL COHORT PROGRAM



The Institute for Coordinated Community Response offers a year-long cohort program designed to help rural communities build and strengthen collaborative, multidisciplinary responses to domestic violence. Each team includes at least one law enforcement officer, prosecutor, and community advocate, with the option to include additional stakeholders such as probation officers or dispatchers.

The program begins in May and includes a comprehensive schedule of activities. It starts with a pre-cohort site visit between January and April to assess local needs and build momentum. In May, teams attend a kickoff training at the Conference on Crimes Against Women in Dallas, with travel, lodging, and registration provided. From June to November, teams participate in monthly meetings focused on reviewing local systems, analyzing case studies, and incorporating survivor feedback. In the final phase, from December to May, teams develop and begin implementing priority initiatives based on their assessments.

The program also includes up to four customized in-county trainings and concludes with a return to Dallas for a wrap-up and graduation event the following May. After the program year ends, ICCR continues to support alumni with ongoing training opportunities and discounted conference access. Funded by the U.S. Department of Justice, Office on Violence Against Women, the cohort program offers rural communities valuable guidance, structure, and resources to improve their coordinated responses to domestic violence.

For more information, click [here](#).

RESEARCH & REPORTS

AN EXAMINATION OF ACCESS AND BARRIERS TO CO-OCCURRING DISORDERS TREATMENT IN A RURAL JAIL



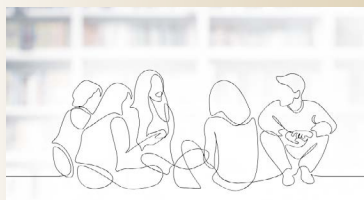
Rural jails encounter various challenges identifying and providing care for inmates with mental health and substance use disorders. Repeated incarceration among individuals highlights the importance of timely screening and treatment to address reoffending rates. This study examined a South Carolina rural jail-based program using data from 4,966 arrests, of which 153 led to treatment. The results indicate that actuarial post-arrest disorder screening is the main method for connecting individuals to appropriate care.

EVALUATION OF A PRIMARY CARE-BASED MEDICATION FOR OPIOID USE DISORDER PROGRAM IN A FULLY INTEGRATED FEDERALLY QUALIFIED HEALTH CENTER



Clackamas Health Centers (CHC), a Federally Qualified Health Center in Oregon, has offered medication for opioid use disorders (MOUD) for over a decade. CHC also provides MOUD to individuals involved with the criminal justice system. This evaluation examines how CHC's MOUD program implements low-barrier care.

INTEGRATING MENTAL HEALTH SUPPORT INTO RURAL LIBRARIES: EVALUATION OF THE LIBRARIES FOR HEALTH (L4H) INITIATIVE



This evaluation and [report](#) provide findings from an initiative integrating nonclinical adult mental health supports into rural libraries. The report is intended for community members and leaders interested in implementing nonclinical mental health support within libraries or other community spaces to expand the mental health workforce. A related toolkit offers guidance for librarians on identifying and initiating mental health supports within libraries to assist patrons with their mental wellbeing.

RURAL JUSTICE COLLABORATIVE

Rural communities face unique challenges that impact their ability to deliver fair and equitable justice. Despite these challenges, rural communities rely on their many strengths to address the needs of their residents.

The National Center for State Courts, in partnership with Rulo Strategies, launched the [Rural Justice Collaborative \(RJC\)](#) to showcase the strengths of rural communities and highlight the cross-sector collaboration that is a hallmark of rural justice systems.

The work under the RJC is supported by a cross-sector advisory council composed of rural judges along with additional stakeholders in the justice, child welfare, and behavioral health systems. The advisory council guides and identifies innovative programs and practices.

HOW RURAL COMMUNITIES ARE USING EMS TO HELP SOLVE THE OPIOID CRISIS

California is one of five states in which the rate of death from drug overdoses is higher in rural areas than urban ones. In the California Health Report, PHI's Bridge Center is highlighted for its program, which trains EMS units to administer medications that help with withdrawal symptoms, helping to reach the state's rural populations with critical care.



Photo: City of Eureka

A NEW TREATMENT STUDY IS SHOWING PROMISE FOR RURAL MAINERS WITH OPIOID USE DISORDER

With opioid addiction continuing to affect thousands of residents in Maine each year, Seaport Community Health Center (SCHC) in Belfast, a rural area of Maine, is initiating a trial for a new treatment that may significantly enhance access and consistency for individuals struggling with opioid use disorder. SCHC is among several sites involved in a nationwide study assessing the efficacy of Brixadi, an injectable medication designed to treat opioid addiction. Unlike traditional medications such as Suboxone, which require daily administration under the tongue, Brixadi is administered monthly.



PROGRAMS

REAL JUSTICE STARTS WITH LISTENING, NOT LABELS

This article examines how individuals in Montana and across the United States are often identified by the alleged crimes they are charged with rather than by their personal histories or circumstances. It describes ongoing efforts to address this issue, such as a collaboration between Bail Disruptor Riley and the Confederated Salish & Kootenai Tribes on the Flathead Reservation. Working with the Tribal Defenders Office, which uses a holistic defense approach, Riley offers support that acknowledges each person's unique background, needs, and goals.



HOW A NEW PROGRAM IS SPARKING CHANGE IN OHIO JAILS

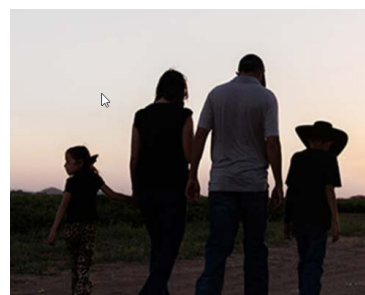
A couple of years ago, the Sandusky County Jail was the first in Ohio to launch a program called [IGNITE](#), which stands for Inmate Growth Naturally and Intentionally through Education. IGNITE started in 2020 at a county jail in Flint, Michigan. The sheriff there wanted to shift the jail's culture and reduce the rate of people returning to jail. So they started offering courses to teach skills like financial literacy and parenting. Since then, the National Sheriff's Association has adopted the program and has spread to more than 25 jails nationwide.



PRESENTATIONS

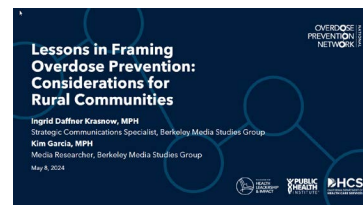
BREAKING BREAD: "OUT OF THE SHADOWS" SCREENING & RURAL MENTAL HEALTH DISCUSSION

In this recording of Farm Aid's monthly Breaking Bread series, the presenters host a screening of the short film *Out of the Shadows*. The film reflects on the mental health crisis in rural America and is followed by a discussion with special guests and resource sharing led by Farm Aid's Hotline Team.



LESSONS IN FRAMING OVERDOSE PREVENTION: CONSIDERATIONS FOR RURAL COMMUNITIES

To assist rural communities in effectively communicating overdose prevention, the Berkeley Media Studies Group (BMSG) offers comprehensive insights on how this topic is framed within rural contexts. Their presentation covers key components, including messaging strategies (beginning at 9:49), methods for framing and reframing the issue (16:28), utilization of Lakoff's Levels of Framing (22:21), relevant research findings (25:16), techniques for message development (30:03), and recommendations for selecting effective messengers and communication practices (36:18).



RESOURCE

REDUCING STIGMA RELATED TO SUD IN RURAL CARE SETTINGS

Stories of recovery have the power to change viewpoints. They show how recovery from substance use disorder (SUD) is achievable and reveal the impact that treatment and compassionate care can have on a person's life. The posters in this gallery can be displayed in patient care settings to promote an environment free of SUD stigma. QR codes on the posters link to videos where individuals share their stories and provide access to resources and materials.

